

SI Rod end SI25-PK-DURBAL - SI25-PK-DURBAL

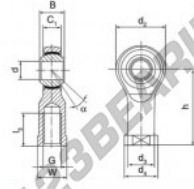
<https://www.123bearing.eu/bearing-housing/rod-end/si/si25-pk-durbal>

SI25-PK



female thread;
maintenance free,
according to
DIN ISO 12240-4,
series K

Description: DIN ISO rod end K series. Sliding combination steel / bronze-PTFE composite.



rod end body:
surface case plated

Sliding combination:
steel / bronze-PTFE composite

inner ring:
bearing steel hardened and ground

Outer ring:
rod end body pressed around, outer race
lined with bronze-PTFE composite

Lubrication:
maintenance free

order number	measurement (mm)					
right hand thread	d	G	B	C	d ₂	d ₄
SI 25 PK	25	M 24 x 2	31	22,00	61	33,5

type	measurement (mm)			load rating	weight
	l ₁ min	w	h	C ₀ (kN)	(kg)
SI / SIL 25 PK	42	36	94	15	85,00

PRODUCT FEATURES

Brand	DURBAL
N° Ean13	3663952492315
Inside diameter	25 mm
Outside diameter	61 mm
Thickness	31 mm
Type	SI
Weight	720 g
Thread	Right-hand thread
Lubrication	without
Packaging	1

contact@123bearing.eu

+33 359 36 04 90

CRT4 de Lesquin 60 Rue Du Haut De Sainghin 59273 Fretin FRANCE