

SI Rod end BEF22-20-502-DURBAL - BEF22-20-502-DURBAL

<https://www.123bearing.eu/bearing-housing/rod-end/si/bef22-20-502-durbal>

BEF22-20-502



rod end housing:
forged steel, tempered, surface galvanized, free of Cr VI

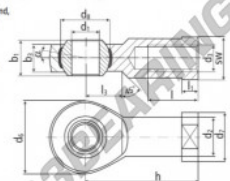
joint ball:
ball bearing steel, hardened and ground, surface superfinished and chromium plated

race:
nylon / teflon / glass fibre compound

tolerances:
see page 10

DURBAL® heavy-duty rod ends with integral spherical plain bearing

female thread:
maintenance free, adapter sizes according to DIN ISO 12240-4, series K, thread according to ISO 8139



order number		measurements [mm]										
type	right-hand thread	left-hand thread	d ₁	d ₂	d ₃	d ₄	d ₅	d ₆	d ₇	d ₈	b ₁	b ₂
BEF 22	-20	-502	22	30,0	M 22 x 1,5	54	38	38,05	28	20,0		
type	h	l	l ₁	l ₂	SW	α ₁ ¹ [°]	α ₂ ² [°]	weight [kg]	basic load rating dyn. stat. C ₁₀ [N] C ₀ [N]			
BEF 22	84	37	12,0	26	32	15,5	10,0	0,520	38230 95600			

PRODUCT FEATURES

Brand	DURBAL
N° Ean13	3663952508221
Inside diameter	22 mm
Outside diameter	54 mm
Thickness	28 mm
Type	SI
Weight	520 g
Thread	Left-hand thread
Lubrication	without
Packaging	1

contact@123bearing.eu

+33 359 36 04 90

CRT4 de Lesquin 60 Rue Du Haut De Sainghin 59273 Fretin FRANCE