

SA Rod end BEM10-60-501-DURBAL - BEM10-60-501-DURBAL

<https://www.123bearing.eu/bearing-housing/rod-end/sa/bem10-60-501-durbal>

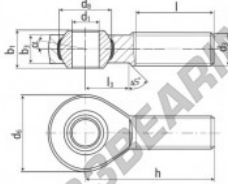
BEM10-60-501



male thread;
maintenance free,
adapter sizes
according to
DIN ISO 12240-4,
series K



**DURBAL® heavy-duty rod ends
with integral spherical
plain bearing in stainless steel**



rod end housing:
stainless steel 1.4301, rolled thread,
surface with pickling treatment

joint ball:
stainless steel, hardened and ground,
surface superfinished

race:
nylon / teflon / glass fibre compound

tolerances:
see page 10

order number		measurements [mm]	
type	right-hand thread left-hand thread	d ₁	d ₂
BEM 10 -60	-501	10	M 10
		d ₃	l ₁
		l ₂	l ₃
		h	α ₁
		weight	basic load rating
			dyn. C
			stat. C ₀
			[N]
			[N]
BEM 10		28	19,00
		14	10,5
		0,060	6400
			14000

PRODUCT FEATURES

Brand	DURBAL
N° Ean13	3663952509730
Inside diameter	10 mm
Outside diameter	28 mm
Thickness	14 mm
Type	SA
Weight	60 g
Thread	Right-hand thread
Lubrication	without
Packaging	1

contact@123bearing.eu

+33 359 36 04 90

CRT4 de Lesquin 60 Rue Du Haut De Sainghin 59273 Fretin FRANCE