

SA Rod end BEM30-60-502-DURBAL - BEM30-60-502-DURBAL

<https://www.123bearing.eu/bearing-housing/rod-end/sa/bem30-60-502-durbal>

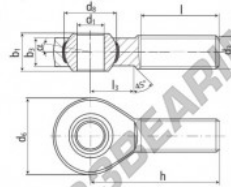
BEM30-60-502



male thread;
maintenance free,
adapter sizes
according to
DIN ISO 12240-4,
series K



**DURBAL® heavy-duty rod ends
with integral spherical
plain bearing in stainless steel**



rod end housing:
stainless steel 1.4301, rolled thread,
surface with pickling treatment

joint ball:
stainless steel, hardened and ground,
surface superfinished

race:
nylon / teflon / glass fibre compound

tolerances:
see page 10

order number (right-hand / left-hand thread)	measurements [mm]							
type	d ₁	d ₂	d ₃	h ₁	b ₁	b ₂		
BEM 30 -60	-502	30	M 30 x 2	70	50,75	37	25,0	
type	measurements [mm]			weight	basic load rating			
type	h	l	l ₃	α ₁ ¹ [°]	α ₂ ² [°]	C [N]	C ₀ [N]	
BEM 30	110	66	35	17,0	10,5	1,015	33800	97100

PRODUCT FEATURES

Brand	DURBAL
N° Ean13	3663952509891
Inside diameter	30 mm
Outside diameter	70 mm
Thickness	37 mm
Type	SA
Weight	1015 g
Thread	Left-hand thread
Lubrication	without
Packaging	1

contact@123bearing.eu

+33 359 36 04 90

CRT4 de Lesquin 60 Rue Du Haut De Sainghin 59273 Fretin FRANCE