

## SA Rod end BEM30-60-501-DURBAL - BEM30-60-501-DURBAL

<https://www.123bearing.eu/bearing-housing/rod-end/sa/bem30-60-501-durbal>

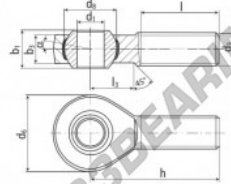
### BEM30-60-501



male thread;  
maintenance free,  
adapter sizes  
according to  
DIN ISO 12240-4,  
series K



**DURBAL® heavy-duty rod ends  
with integral spherical  
plain bearing in stainless steel**



rod end housing:  
stainless steel 1.4301, rolled thread,  
surface with pickling treatment

joint ball:  
stainless steel, hardened and ground,  
surface superfinished

race:  
nylon / teflon / glass fibre compound

tolerances:  
see page 10

order number		measurements [mm]					
type	right-hand thread	d <sub>1</sub>	d <sub>2</sub>	d <sub>3</sub>	h <sub>1</sub>	h <sub>2</sub>	
BEM 30 -60	-501	30	M 30 x 2	70	50,75	37	25,0
measurements [mm]		weight		basic load rating			
type	h	l	l <sub>3</sub>	α <sub>1</sub> <sup>1</sup> [°]	α <sub>2</sub> <sup>2</sup> [°]	dyn C	stat. C <sub>0</sub> [N]
BEM 30	110	66	35	17,0	10,5	1,015	33800 97100

## PRODUCT FEATURES

Brand	DURBAL
N° Ean13	3663952509907
Inside diameter	30 mm
Outside diameter	70 mm
Thickness	37 mm
Type	SA
Weight	1015 g
Thread	Right-hand thread
Lubrication	without
Packaging	1

[contact@123bearing.eu](mailto:contact@123bearing.eu)

+33 359 36 04 90

CRT4 de Lesquin 60 Rue Du Haut De Sainghin 59273 Fretin FRANCE